



BUCKNER'S CROSSING

NORTHWEST FORT WAYNE

Located on Flaugh Road, 1 mile north of Bass Road, only minutes from Glenbrook Square and Jefferson Pointe shopping centers. Additionally, Buckner's Crossing is one mile from Suburban Bethlehem Lutheran School and nearby are Canterbury, Concordia and Bishop Dwenger High Schools.

- Water, walkout and daylight lots available
- Open to all builders
- Utilities include AEP, NIPSCO, Frontier with FIOS, and Fort Wayne Sewer & Water
- Fort Wayne Community Schools OR Northwest Allen County Schools in Section IV
- Outside Fort Wayne City Limits
- Direct access to Buckner Park

COMING SOON!

Buckner's Crossing Section V

CONTACT US

Cynthia Wilkin

Vice President of Sales & Marketing

+1 260 426 9800

cwilkin@sturgesfw.com

www.sturgesdev.com



BUCKNER'S CROSSING VILLAS

LOT PRICING

SECTION II

<u>LOT NO.</u>		<u>PRICE</u>
42		\$47,500
43	Sold	\$47,500
44	Sold	\$47,500
45		Closed
46		Closed
47		Closed
48		Closed
49		Closed
50		Closed
51		\$46,900
52	Hold	\$48,900
53		Closed
54		Closed
55		Closed
56		Closed
57		Closed

SECTION III

<u>LOT NO.</u>		<u>PRICE</u>
58		\$51,900
59		Closed
60	Sold	\$51,900
61		Closed
62		Closed
63		Closed
64		Closed
65	Hold	\$50,500
66	Sold	\$61,000
67		Closed
68		Closed
69		Closed
70		Closed
71		Closed
72		Closed
73		Closed
74		Closed

*Minimum square footage for a one-story is 1,600 and 2,000 for a two-story.

DATE: October 1, 2020

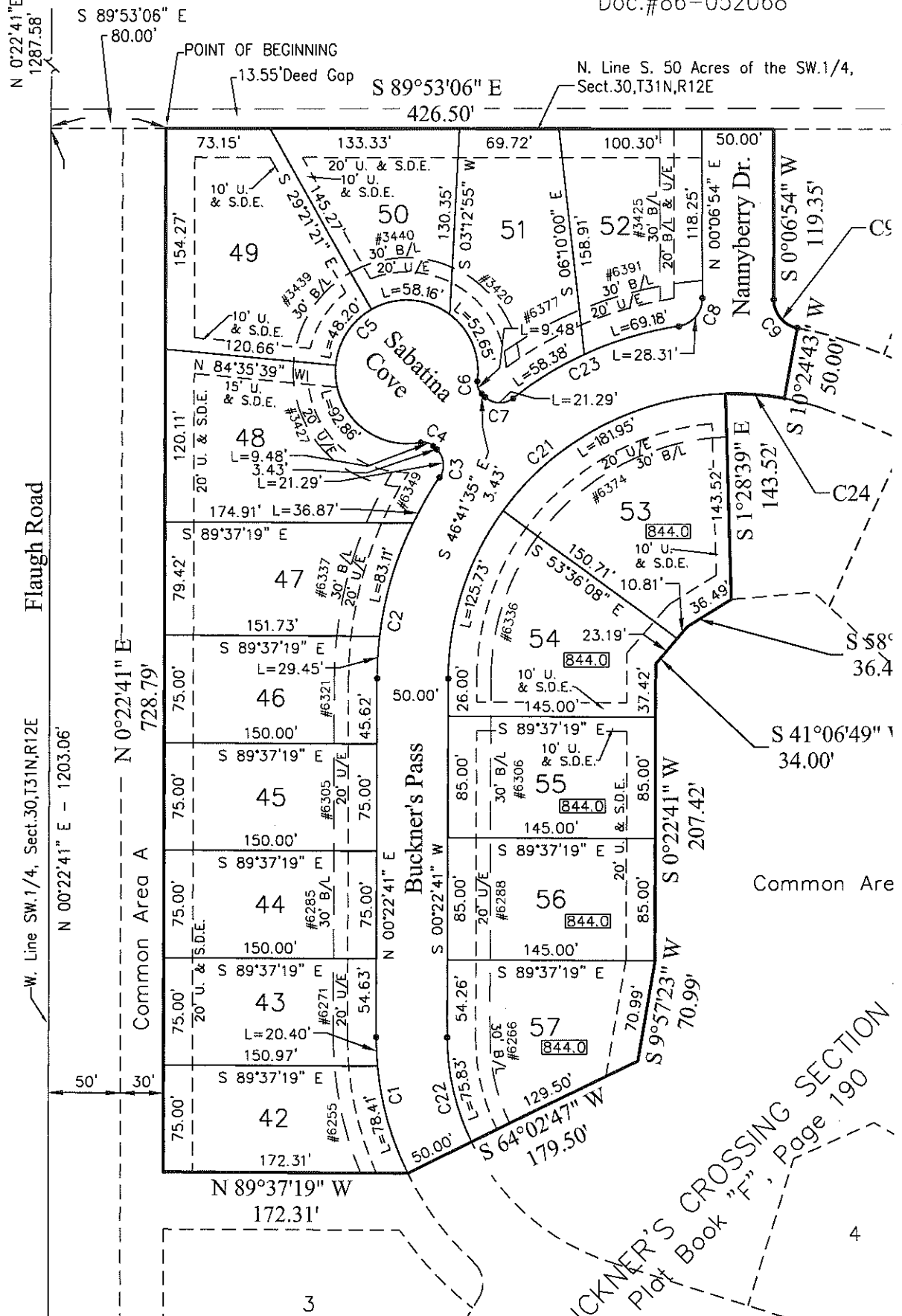
Prices subject to change without notice. Prices exclude sidewalks and sewer tap fees, permit and utility fees and assessments related thereto.



1.1/4
R12E
(lush)
story

Yarnelle

Doc.#86-052068



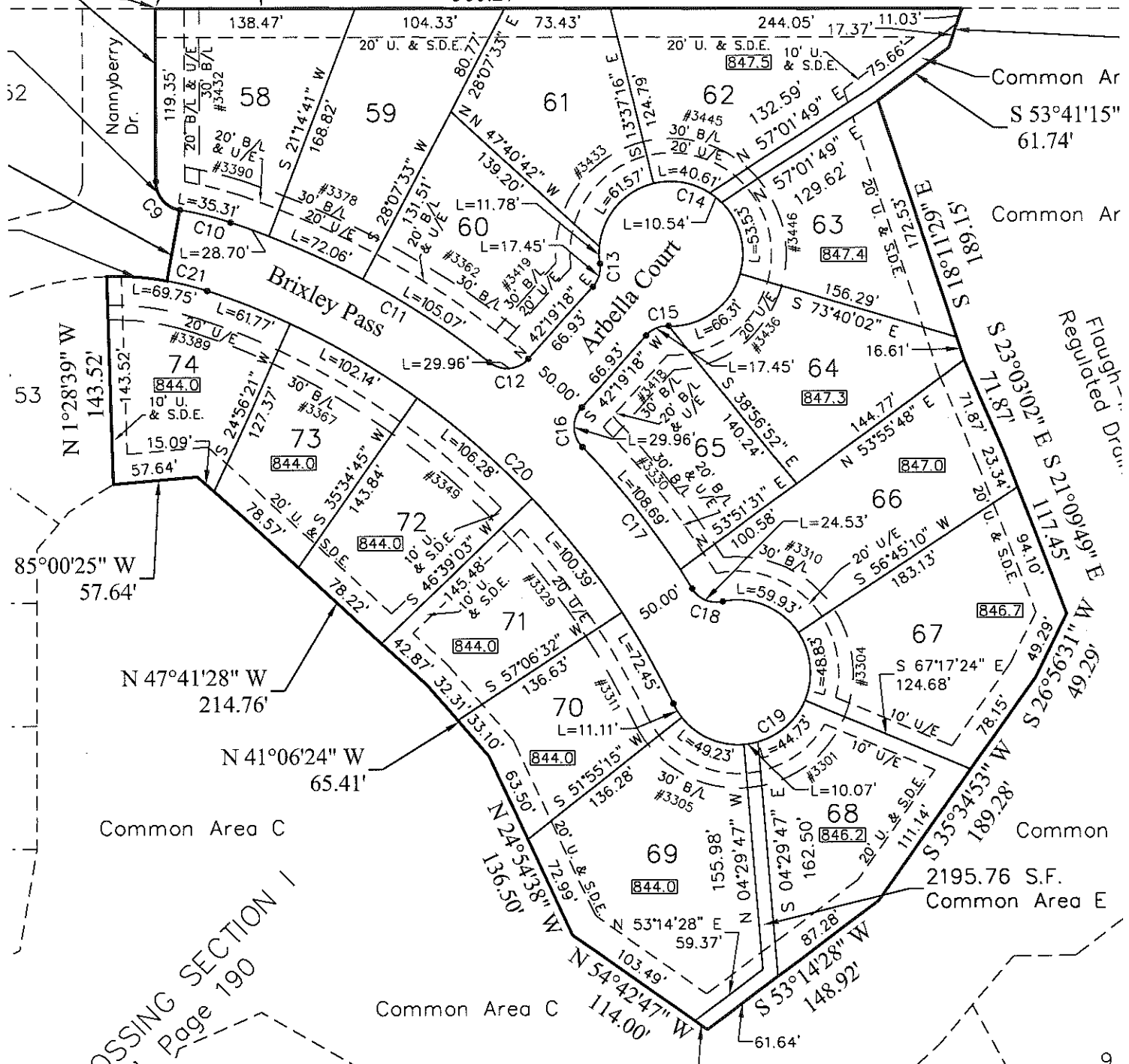
BUCKNER'S CROSSING SECTION
Plot Book "F", Page 190

Yarnelle
c.#86-052068

POINT OF BEGINNING

N. Line S. 50 Acres of the SW.1/4,
Sect.30,T31N,R12E

S 89°53'06" E
560.27'



Crossing Section
Page 190

BUCKNER'S CROSSING

LOT PRICING SECTION IV

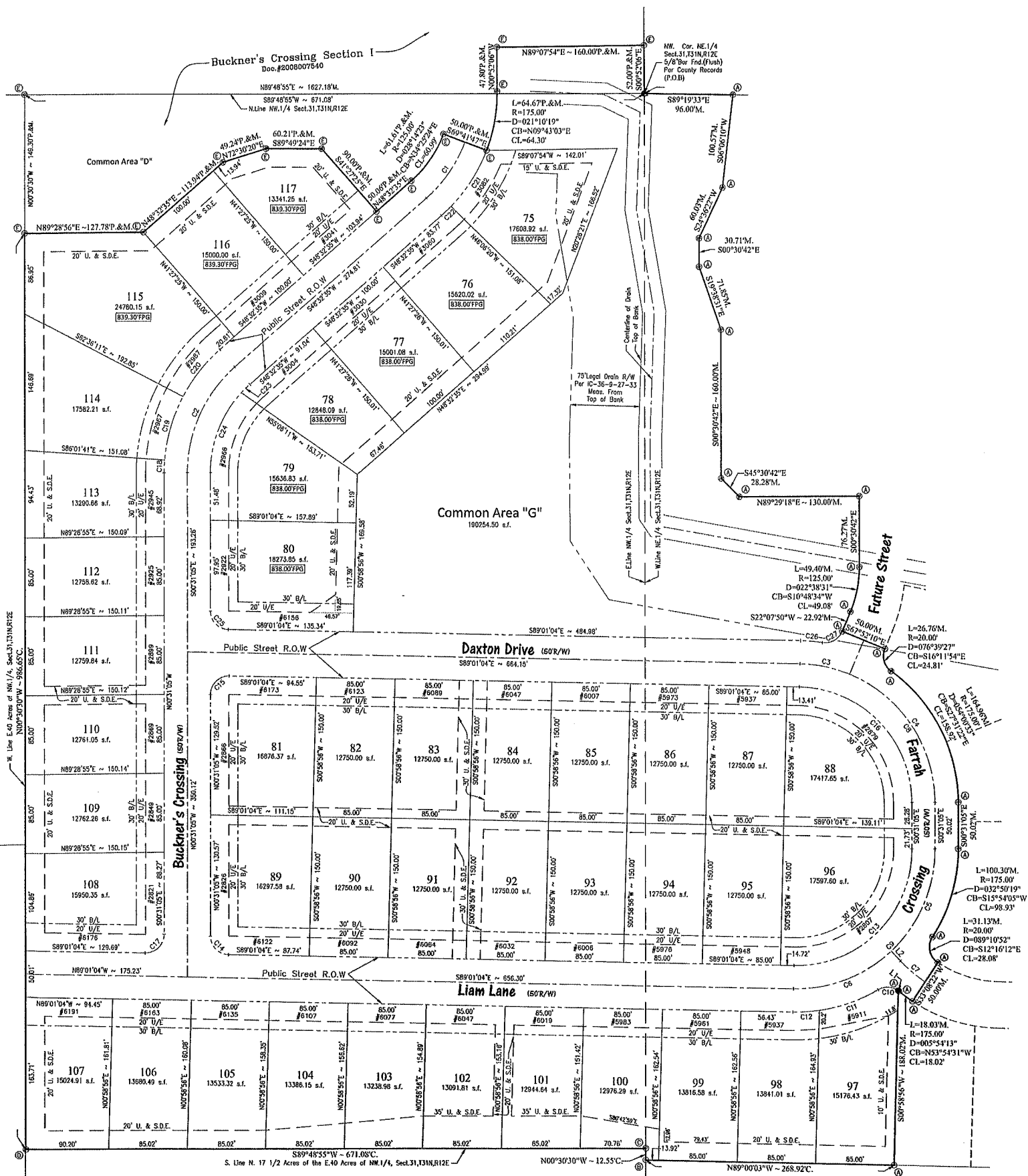
LOT NO.	PRICE	LOT NO.	PRICE
75	Closed	97	Closed
76	Closed	98	Closed
77	Closed	99	Closed
78	Closed	100	Closed
79	Closed	101	Sold \$63,000
80	Closed	102	Hold \$63,000
81	Closed	103	Closed
82	Closed	104	Closed
83	Closed	105	Sold \$63,000
84	Sold \$57,500	106	Closed
85	Closed	107	Closed
86	Closed	108	Closed
87	Sold \$57,500	109	Closed
88	Closed	110	Closed
89	Sold \$57,500	111	Closed
90	Closed	112	Closed
91	Hold \$57,500	113	Closed
92	Hold \$57,500	114	Closed
93	Closed	115	Closed
94	Sold \$57,500	116	Closed
95	Closed	117	Closed
96	Sold \$55,500		

*Minimum square footage for a one-story is 1,800 and 2,200 for a two-story.

DATE: October 1, 2020

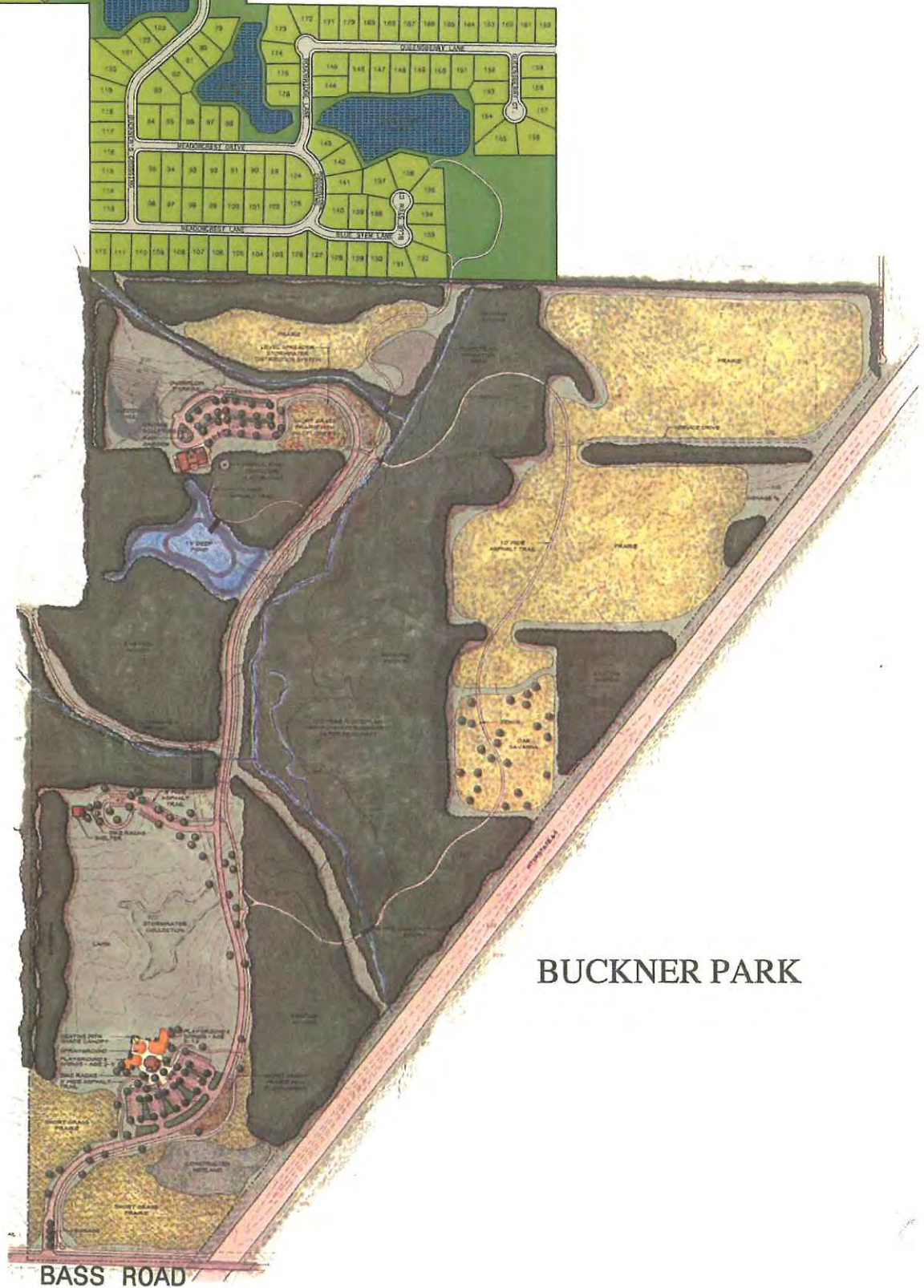
Prices subject to change without notice. Prices exclude sidewalks and sewer tap fees, permit and utility fees and assessments related thereto.





FLAUGH ROAD

BUCKNER'S CROSSING



BUCKNER PARK

BASS ROAD